



## OSHA & CUSTOM-TAILORED

- SAFETY TRAININGS
- SAFETY AUDITS
- INSPECTIONS

**Package  
Savings  
Available!**

**Bundle 2 or more  
trainings and  
SAVE!**

 256.248.0413

[MartinSupply.com/SolutionsPlus](http://MartinSupply.com/SolutionsPlus)

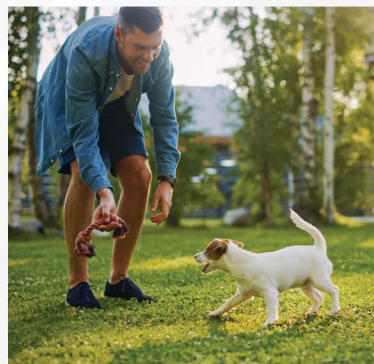
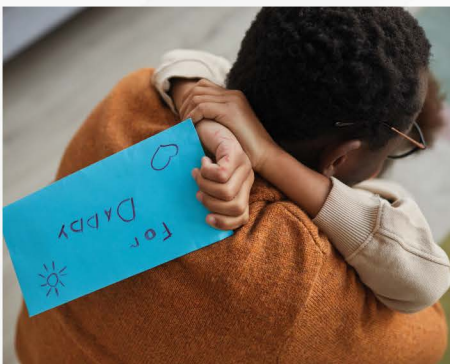






## We know the true meaning of a safe workplace.

Safe at work means coming home to family, tailgating with friends, playing fetch with Fred and ensuring the creation of future families. From audits and inspections to trainings and PPE fittings, Martin Solutions Plus helps create a safe and healthy work environment where accidents decrease, productivity improves and employees return home to the ones they love.



Creating a safe work environment and culture is challenging. We make it easier by conducting a detailed audit of your operation to identify where safety improvements are needed.

Together, we'll create a plan that ensures OSHA compliance, keeps workers safe, and fits your budget.

## Let's get started!



We Help Companies *Operate Better*

Contact us for a **FREE Safety Consultation.**

☎ 256.248.0413 ✉ [solutionsplus@martinsupply.com](mailto:solutionsplus@martinsupply.com)

### OSHA TRAINING PROGRAMS

REF ID: MSP0S10

#### **OSHA 10-Hour** Safety & Health for General Industry

Certificate and  
Department of Labor  
Card Upon Completion

REF ID: MSP0S30

#### **OSHA 30-Hour** Safety & Health for General Industry

Certificate and  
Department of Labor  
Card Upon Completion

REF ID: MSP0S08

#### **Martin 8-Hour** Safety & Health for General Industry

*Can be counted as your company's regular  
OSHA mandated safety training.*

Certificate of  
Completion

### CUSTOM-TAILORED SAFETY TRAININGS



REF ID: MSPCSPP

#### **Permit-Required Confined Space Entry & Regulations**

*OSHA 29 CFR 1910.146 Permit-Required Confined Spaces & ANSI Z117.1 Safety Requirements for Confined Spaces Training Certification*

**Includes:** Certificate upon completion.



REF ID: MSPFPTR

#### **Fall Protection "Authorized Person" Equipment & Regulations**

*OSHA 29 CFR Subpart M — Fall Protection; and 1910.23 — Guarding Floor & Wall Openings & Holes Training*

**Includes:** Certificate of completion. Valid for 1 year.



REF ID: MSPCPTR

#### **"Competent Person" Fall Protection Training (16 hour)**

*U.S. Army Corps of Engineers 385-1-SAFETY AND HEALTH REQUIREMENTS, OSHA 29 CFR 1926 Subpart M—Fall Protection, Subpart E—Personal Protective Equipment, Subpart L—Scaffolding and 29 CFR 1910 Subpart D—Walking/Working Surfaces, Subpart F—Powered Platforms, Man lifts, & Vehicle Mounted Work Platforms. & ANSI/ASSE Z359.2*

**Includes:** Certificate upon completion. Valid for 2 years.





REF ID: MSPCPRF

### **"Competent Person" Refresher Fall Protection Training (8 Hours)**

**Includes:** Certificate upon completion. Valid for 2 years.



REF ID: MSPFLOT

### **Forklift Operator Training & Regulations**

*OSHA 29 CFR 1910.178 Powered Industrial Trucks & ANSI 656.1 Safety Standard for Powered Industrial Trucks Training Certification*

**Includes:** Certificate and wallet card upon completion.  
*Driving Test (required by OSHA) included. Call for details and pricing.*



REF ID: MSPLOTO

### **Lockout/Tagout Equipment & Regulations (4 Hours)**

*OSHA 29 CFR 1910.147—The Control of Hazardous Energy (Lockout/Tagout) Training Certification*

**Includes:** Certificate of completion. Valid for 1 year.



REF ID: MSPCPRF

### **Portable & Fixed Ladders, Mobile Ladder Stands, Industrial Stairs & Regulations**

*29 CFR 1910.21—29, Subpart I and ANSI 14.5 2007—Portable Reinforced Plastic Ladders.*

**Includes:** Certificate of completion. Valid for 1 year.



REF ID: MSPMEWP

### **Mobile Elevated Work Platform (Aerial Lift)**

*OSHA 29 CFR 1926.269 and ANSI/SIA A92.2—2009 Vehicle Mounted Elevating and Rotating Work Platforms*

**Includes:** Certificate and wallet card upon completion. Valid for 1 year.  
*Aerial & Scissor Lift Driving Performance Test (required by OSHA) included. Call for details and pricing.*



REF ID: MSPMGTR

### **Introduction to Machinery & Machine Guarding Equipment & Regulations (4 Hours)**

*OSHA 29 CFR 1910.211—Machinery & Machine Guarding through 1910.219; ANSI B11.0-2025—Safety of Machinery; General Requirements & Risk Assessment; and B11.19-2015—Machine Guarding Standards*

**Includes:** Certificate of completion. Valid for 1 year.  
*Optional Equipment Inspection available. Call for details and pricing.*



REF ID: MSPRPTR

### Respiratory Equipment & Regulations

OSHA 29 CFR 1910.134—Respiratory Protection Training Certification

**Includes:** Certificate of completion.



REF ID: MSPGSTR

### General Safety — Multiple Topics/Personal Protective Equipment & Regulations

OSHA 29 CFR 1910.132—General Requirements; 1910.133—Eye & Face Protection; 1910.134—Respiratory; 1910.135—Head Protection; 1910.136—Foot Protection; 1910.138—Hand Protection; 1910.95—Hearing Protection Training Certification

**Includes:** Certificate upon completion. Valid for 1 year.



REF ID: MSPHCTR

### HAZCOM

OSHA 29 CFR 1910.1200—Hazard Communication & 2012 Revised Hazard Communication (HCS) Training Certification

**Includes:** Certificate upon completion. Valid for 1 year.



REF ID: MSPGCT

### General Contractor Training

Multiple Topics Tailored to your Needs

**Includes:** Certificate of completion. \*Paid for by contractor to enter your facility.

## SAFETY AUDITS



REF ID: MSPHPAU

### Hand Protection Audit



REF ID: MSPPPEAU

### General PPE Audit



REF ID: MSPEAPL

### Emergency Action Plan



REF ID: MSPBRBT

### Breather Box Testing



REF ID: MSP5SAU

### 5S Audit



REF ID: MSPPSCA

### Plant Safety Compliance Audit

### ANNUAL SAFETY INSPECTIONS



REF ID: MSPEWIN

**Eyewash, Face/Eyewash, & Shower Station Inspection**



REF ID: MSPLIN

**Ladder Inspection**



REF ID: MSPPEIN

**Portable Fire Extinguisher Inspection**



**Competent Person Fall Protection Equipment Inspection**

#### Disclaimer for Training Classes:

Martin training classes have been designed to assist you in complying with OSHA regulations. The materials provided are intended to be accurate and helpful, but are not meant to be a substitute for OSHA regulations. It is impossible for any training to cover every aspect of OSHA regulation; therefore, our training cannot cover everything a person should know about a particular subject, nor can it qualify anyone as a "competent" person. Martin, its affiliates, and their respective employees, contractors, directors, officers, successors and assigns (the "Martin Parties") make no warranties or guarantees, express or implied, assume no responsibility or liability of any kind related to the training being provided. The Martin Parties specifically disclaim responsibility for any liability, loss, injury or risk which is incurred as a direct or indirect result of the material or services included in or omitted from this training or the use thereof.

#### Disclaimer for Inspections and Audits:

Martin inspections and audits have been designed to assist you in complying with OSHA regulations. The information, reports, opinions and analyses ("Information") provided by Martin pursuant to or in connection with such inspections or audits are intended to be accurate and helpful, but are not meant to be a substitute for independent review and compliance with OSHA regulations. Martin, its affiliates, and their respective employees, contractors, directors, officers, successors and assigns (the "Martin Parties") make no warranties or guarantees, express or implied, assume no responsibility or liability of any kind related to the inspection, audits and/or Information being provided. The Martin Parties specifically disclaim responsibility for any liability, loss, injury or risk which is incurred as a direct or indirect result of the inspection, audits and/or Information (including information which is included or omitted therefrom) or the use thereof.



More Solutions to Help  
Your Company **Operate Better**



## Safety Solutions

Head-to-Toe PPE Products & Equipment

## Industrial Solutions

MRO Products That Drive Efficiency  
& Cost Savings

## Integrated Solutions

Storeroom Solutions That Improve  
Your Bottom Line

## Fastening Solutions

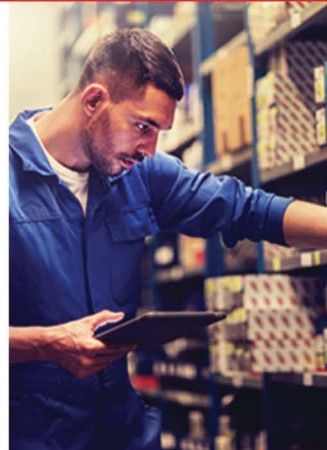
Made-to-Print Fasteners & Class "C" Components



MartinSupply.com | 800.828.8116



**SAFETY · INDUSTRIAL · INTEGRATED · FASTENING · SOLUTIONS**



#### **ALABAMA**

► **ANNISTON**

1707-E HILLYER  
ROBINSON PKWY  
OXFORD, AL 36203  
(256) 389.3365

► **BIRMINGHAM**

141 COMMERCE CT  
PELHAM, AL 35124  
(205) 733.9292

► **DECATUR**

3401 HWY 20  
BUILDING J  
DECATUR, AL 35601  
(256) 355.6311

► **SHEFFIELD**

200 APPLETON AVE  
SHEFFIELD, AL 35660  
(256) 383.3132

► **TUSCALOOSA**

3718 11TH AVE  
TUSCALOOSA, AL 35401  
(205) 752.0421

#### **GEORGIA**

► **ATLANTA**

(404) 346.2141

#### **INDIANA**

► **EVANSVILLE**

4720 SPRING ST  
EVANSVILLE, IN 47711  
(812) 425.5167

► **FORT WAYNE**

1121 E WALLACE ST  
FORT WAYNE, IN 46803  
(800) 877.3555

#### **MISSISSIPPI**

► **JACKSON**

125 RIDGELAND PLAZA  
RIDGELAND, MS 39157  
(601) 856.7385

#### **OHIO**

► **COLUMBUS**

236 N HAYES ST  
BELLEFONTAINE, OH 43311  
(800) 877.3555

#### **SOUTH CAROLINA**

► **COLUMBIA**

100 CENTRUM DR  
IRMO, SC 29063  
(800) 877.3555

► **GREENVILLE**

19 CONCOURSE WAY  
GREER, SC 29650  
(864) 848.1958

#### **TENNESSEE**

► **JACKSON**

111-A GORDON ST  
JACKSON, TN 38301  
(731) 424.4300

► **MEMPHIS**

3088 LAKEVIEW RD  
MEMPHIS, TN 38116  
(901) 620.2732

► **NASHVILLE**

208 SPACE PARK  
GOODLETTSVILLE, TN 37072  
(615) 851.8040

#### **CORPORATE OFFICE**

125 N COURT ST  
FLORENCE, AL 35630  
(800) 828.8116



We Help Companies Operate Better. Learn how at **MartinSupply.com.**