

Severe Weather Identification Essentials

MARTIN

Extreme Weather is Increasingly Common - Is Your Facility Prepared?

As weather events become more severe, be prepared with informative safety identification. Our complete line of emergency preparedness identification products help guide and protect from weather threats and disasters.



Severe Weather Shelter

Safety Signs



10" x 14"
10" x 14" MFEX527VS
MFEX527VP



14" x 10"
14" x 10" MFEX524VS
MFEX524VP



14" x 10"
14" x 10" SBMFEX524VS
SBMFEX524VP

Available in Lumi-Glow™



14" x 10"
14" x 10" MLFE544GF
MLFE544GP

Available in Lumi-Glow™



14" x 10"
14" x 10" MLFE546GF
MLFE546GP

See SKU suffix to identify material options:

| Materials |
|-------------------------|
| VS - Adhesive Vinyl |
| VP - Plastic |
| GF - Lumi-Glow™ Flex |
| GP - Lumi-Glow™ Plastic |

3D, 90D & 180D Projection Signs

- Offered in 3 styles (3D, 90D & 180D)
- Projection style allows for greater visibility from more angles
- Plastic only
- Can be mounted with Tapes and Screws, not included



6" x 5" PSP141

Available in Lumi-Glow™



6" x 5" PSP352

Available in Lumi-Glow™



6" H PSJ133



8" x 8" PSP252



8" x 8" PSP463



Tornado Shelter

Safety Signs



10" x 14"
10" x 14"
MFEX528VS
MFEX528VP



10" x 14"
10" x 14"
MFEX556VA (Right arrow)
MFEX557VA (Left arrow)

Available in Lumi-Glow™



10" x 14"
10" x 14"
MLFE548GF
MLFE548GP



10" x 14"
10" x 14"
SBMFEX553VS
SBMFEX553VP

3D, 90D & 180D Projection Signs

(Plastic Only)



12" x 9"
SBPSP393



12" x 9"
SBPSP443



6"H
PSJ134

See SKU suffix to identify material options:

| Materials | |
|-----------|--------------------|
| VS - | Adhesive Vinyl |
| VP - | Plastic |
| VA - | Aluminum |
| GF - | Lumi-Glow™ Flex |
| GP - | Lumi-Glow™ Plastic |

Other Weather Conditions

Fold Up Signs



20" x 12"
PFR124



20" x 12"
PFR601

Pavement Print Sign



17"
PSW736

Icy Conditions Indicator Kit

Kit includes:

- Icy Conditions Aluminum Sign – MSTF527
- IceAlert™ Indicator Sign – FRW975
- Galvanized U-Channel Post – HSP107
- Mounting Hardware – HFN211



18" x 12"
FRW976

Cone Top Signs



10" x 14"
FBC753



10" x 14"
FBC719



36"H
FBC218

Safety Posters



22" x 17"
SP125212L

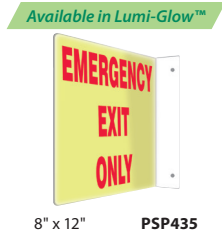


22" x 17"
SP125388L

First Aid & Evacuation

3D, 90D & 180D Projection Signs

(Plastic Only)



Safety Signs



14" x 10"
14" x 10" MEXT519VS
MEXT519VP



10" x 14"
10" x 14" MFSD978VS
MFSD978VP



10" x 14"
10" x 14" MEXT552VS
MEXT552VP



10" x 14" MLFE508GF (Right Arrow)
10" x 14" MLFE508GP (Right Arrow)
10" x 14" MLFE507GF (Left Arrow)
10" x 14" MLFE507GP (Left Arrow)



10" x 14" MLEX570GF (Right Arrow)
10" x 14" MLEX570GP (Right Arrow)
10" x 14" MLEX571GF (Left Arrow)
10" x 14" MLEX571GP (Left Arrow)

See SKU suffix to identify material options:

| Materials |
|-------------------------|
| VS - Adhesive Vinyl |
| VP - Plastic |
| GF - Lumi-Glow™ Flex |
| GP - Lumi-Glow™ Plastic |

Assembly/Muster Point



18" x 24" FRR910RA



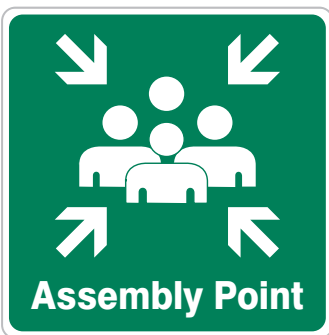
18" x 24" FRR9141RA



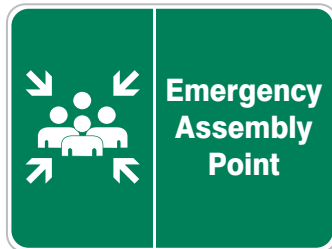
18" x 24" FRR9142RA



18" x 24" FRR9143RA



24" x 24" FRR922RA



18" x 24" FRR928RA



18" x 24" FRR912RA

See SKU suffix to identify material options:

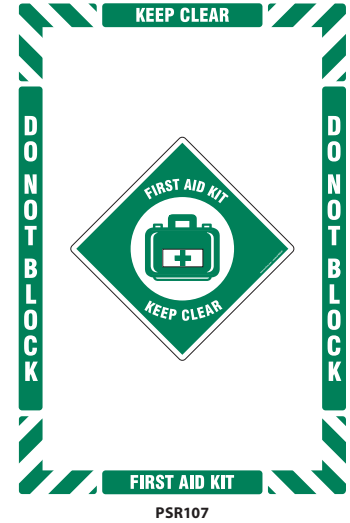
| Materials |
|-------------------------------|
| RA - EGP® Reflective Aluminum |



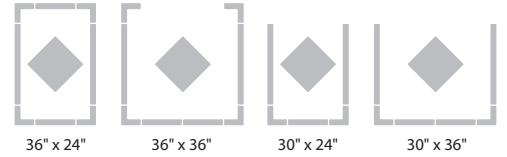
Contact your Martin Sales Rep or call 800.828.8116 to learn more.

Floor Kit

Slip-Gard™ Kit can be configured in multiple sizes. See website for more information.



Configurable in Four Ways!



Floor Sign

SEVERE WEATHER SHELTER

2" x 12" PTP400

Evacuation Map Holders

- Constructed of clear polycarbonate face with standard (non-glow) or photo-luminescent (glow) plastic back
- Simply print your map from your computer and slide into holder; easily change and update
- Includes adhesive foam strips for mounting
- Designed to easily accommodate clear transparency film insert (sold separately)

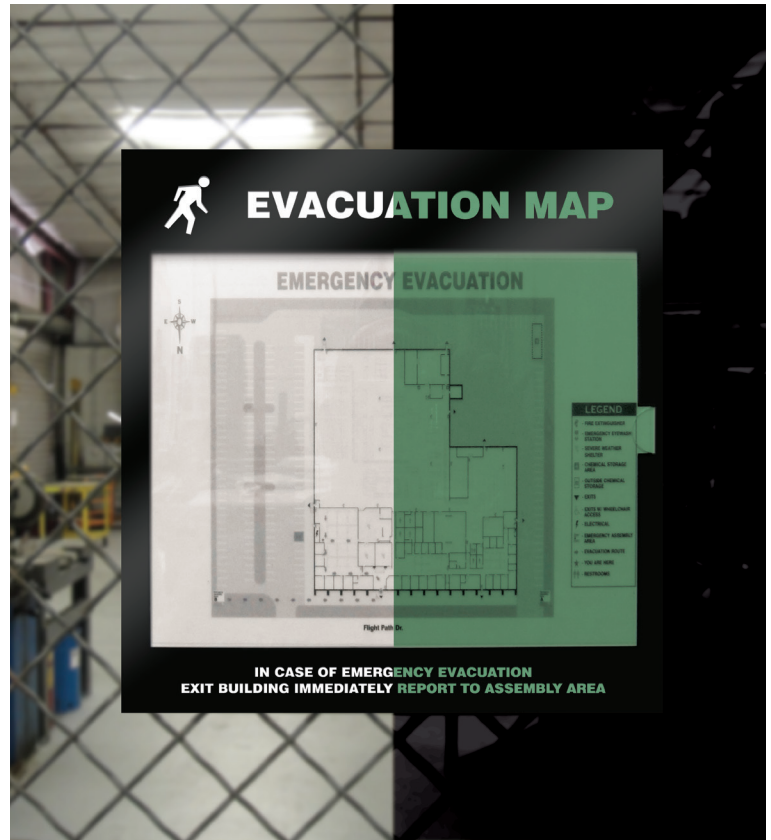
| Insert Size (H x W) | Size (H x W) | No. | Unit |
|---------------------|-------------------|--------|------|
| Standard | | | |
| 8 1/2" x 11" | 12" x 11 1/2" | DTA235 | Each |
| 11" x 17" | 15 1/2" x 17 1/2" | DTA237 | Each |
| Lumi-Glow™ | | | |
| 8 1/2" x 11" | 12" x 11 1/2" | DTA202 | Each |
| 11" x 17" | 15 1/2" x 17 1/2" | DTA204 | Each |



8.5 x 11 DTA303



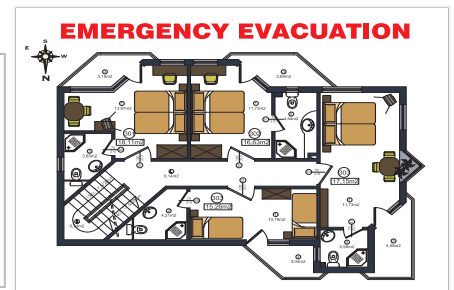
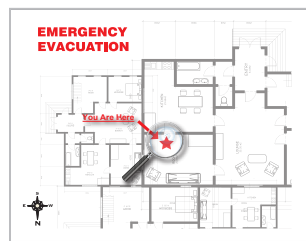
8.5 x 11 DTA306



Displayed with printed map

Clear Inserts for Evacuation Map Holders

| Size (H x W) | No. | Unit |
|-------------------------------------|--------|--------|
| For Inkjet and Laser Printer | | |
| 8 1/2" x 11" | DTA213 | Pack 2 |
| 11" x 17" | DTA215 | Pack 2 |
| For Inkjet Printer | | |
| 8 1/2" x 11" | DTA216 | Pack 2 |
| 11" x 17" / 17" x 11" | DTA217 | Pack 2 |



Information Centers

- Printed with bold red stripes and font for high visibility
- 20" x 15" wall mount aluminum board with a large-capacity coated-wire basket
- Includes a 1 1/2" 3-ring binder



EMC205

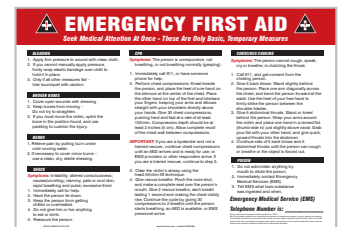


EMC210

CPR and Emergency First Aid Signs



20" x 14"
20" x 14" MFSD607VS
MFSD607VP



14" x 20"
14" x 20" MFSD604VS
MFSD604VP